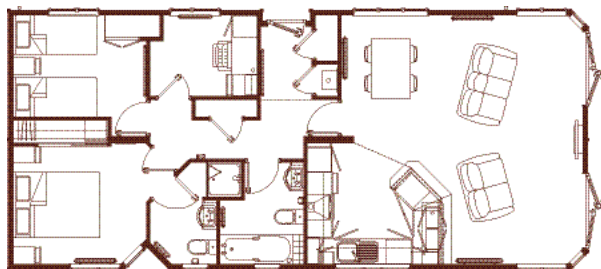
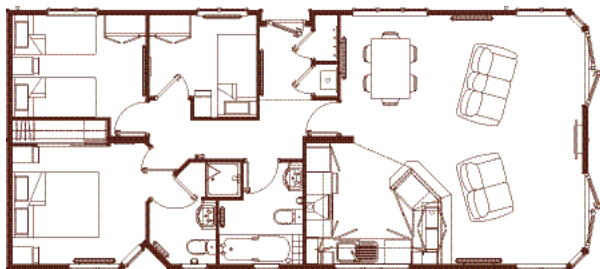


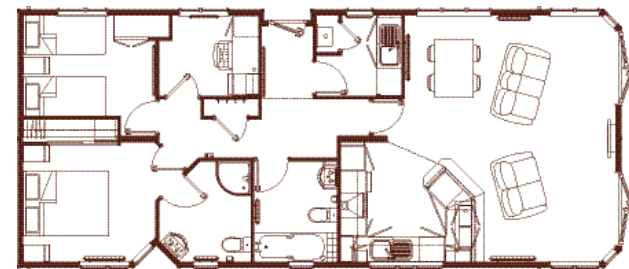
# Jasmine



13.411m x 5.960m (44' x 20') 2BSE



13.411m x 5.960m (44' x 20') 3BE



14.020mx 5.960m (46' x 20') 2BSUE

	Width m (ft)	Length m (ft)
Lounge	3.286 (10'9")	5.795 (19'0")
Dining	2.335 (7'8")	2.973 (9'9")
Kitchen	3.060 (10'0")	2.823 (9'3")
Bedroom One	3.772 (12'5")	3.348 (11'0")
Bedroom Two	3.415 (11'2")	2.823 (9'3")
Study	2.500 (8'2")	1.894 (6'3")
Bathroom	1.950 (6'5")	2.373 (7'9")
En-suite	2.126 (6'5")	2.373 (7'9")

	Width m (ft)	Length m (ft)
Lounge	3.286 (10'9")	5.795 (19'0")
Dining	2.335 (7'8")	2.973 (9'9")
Kitchen	3.060 (10'0")	2.823 (9'3")
Bedroom One	3.772 (12'5")	3.348 (11'0")
Bedroom Two	3.100 (10'2")	2.823 (9'3")
Bedroom Three	2.500 (8'2")	2.373 (7'9")
Bathroom	1.950 (6'5")	2.373 (7'9")
En-suite	2.126 (6'12")	2.373 (7'9")

	Width m (ft)	Length m (ft)
Lounge	3.296 (10'10")	5.795 (19'0")
Dining	2.298 (7'6")	2.973 (9'9")
Kitchen	3.060 (10'0")	2.823 (9'3")
Utility	2.000 (6'7")	1.894 (6'3")
Bedroom One	3.772 (12'5")	3.348 (11'0")
Bedroom Two	3.415 (11'2")	2.823 (9'3")
Study	2.325 (7'8")	1.894 (6'3")
Bathroom	1.950 (6'5")	2.373 (7'9")
En-suite	2.150 (7'1")	2.373 (7'9")

## Code Key

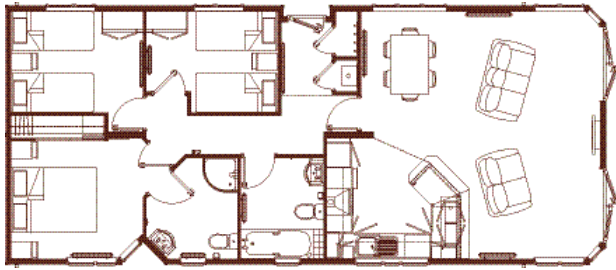
- 2BE..... Two Bedroom, En-suite.
- 3BE..... Three Bedroom, En-suite.
- 2BH..... Two Bedroom, Hall.
- 2BHE..... Two Bedroom, Hall, En-suite.
- 3BHE..... Three Bedroom, Hall, En-suite.
- 2BSE..... Two Bedroom, Study, En-suite.
- 3BUE..... Three Bedroom, Utility, En-suite.
- 2BHUE..... Two Bedroom, Hall, Utility, En-suite.
- 3BHUE..... Three Bedroom, Hall, Utility, En-suite.
- 2BSUE..... Two Bedroom, Study, Utility, En-suite.
- 2BSHE..... Two Bedroom, Study, Hall, En-suite.

These layouts show our Standard range although other sizes are available up to 20m (65'7") and 15.24m (50') on Parsley & Saffron Lodges.

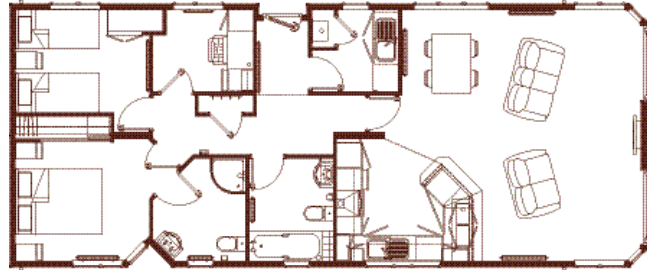
In addition, through our Bespoke service you have the flexibility to alter layouts to suit your requirements - see page 36 of the brochure for more details.

Larger more detailed A3 size floor plans are available on request.

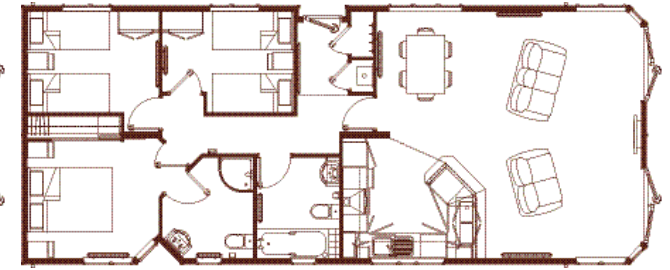




14.020m x 5.960m (46' x 20') 3BE



14.630m x 5.960m (48' x 20') 2BSUE



14.630m x 5.960m (48' x 20') 3BE

	Width m (ft)	Length m (ft)
Lounge	3.296 (10'10")	5.795 (19'0")
Dining	2.335 (7'8")	2.973 (9'9")
Kitchen	3.060 (10'0")	2.823 (9'3")
Bedroom One	3.772 (12'5")	3.348 (11'0")
Bedroom Two	3.100 (10'2")	2.823 (9'3")
Bedroom Three	3.100 (10'2")	2.373 (7'9")
Bathroom	1.950 (6'5")	2.373 (7'9")
En-suite	2.150 (7'1")	2.373 (7'9")

	Width m (ft)	Length m (ft)
Lounge	3.905 (12'10")	5.795 (19'0")
Dining	2.300 (7'7")	2.973 (9'9")
Kitchen	3.060 (10'0")	2.823 (9'3")
Utility	2.000 (6'7")	1.894 (6'3")
Bedroom One	3.772 (12'5")	3.348 (11'0")
Bedroom Two	3.415 (11'2")	2.823 (9'3")
Study	2.325 (7'8")	1.894 (6'3")
Bathroom	1.950 (6'5")	2.373 (7'9")
En-suite	2.150 (7'1")	2.373 (7'9")

	Width m (ft)	Length m (ft)
Lounge	3.905 (12'10")	5.795 (19'0")
Dining	2.335 (7'8")	2.973 (9'9")
Kitchen	3.060 (10'0")	2.823 (9'3")
Bedroom One	3.772 (12'5")	3.348 (11'0")
Bedroom Two	3.100 (10'2")	2.823 (9'3")
Bedroom Three	3.100 (10'2")	2.373 (7'9")
Bathroom	1.950 (6'5")	2.373 (7'9")
En-suite	2.150 (7'1")	2.373 (7'9")